

**First Lutheran Church,
Newton IA**

2018

First Epistle

From the Pastor...

A PRAYER OF THANKSGIVING

Even though I clutch my blanket and growl when the alarm goes off every morning, thank you, Lord, that I can hear; there are many who can't.

Even though I keep my eyes tightly closed against the morning light as long as possible, thank you, Lord, that I can see; there are many who can't.

Even though I huddle in bed and put off getting up, thank you, Lord, that I have the strength to get out of bed; there are many who can't.

Even though the first hour of my day is hectic... socks are lost... toast is burned... and tempers are short, thank you, Lord, for my family; there are many who are lonely.

Even though our breakfast table never looks like Martha Stewart set it and the menu is sometimes unbalanced, thank you, Lord, for the food that we have; there are many who are hungry.

Even though my job is sometimes difficult, thank you, Lord, for the opportunity to work; there are many who are unemployed.

Even though I grumble from day to day and wish my circumstances were not quite so modest, thank you, Lord, for the gift of Life! AMEN.

* * * * *

When it's hard to give thanks, let us not forget the many blessings that God has given to each and everyone of us. We have been abundantly blessed! Thanks be to God!!!

Living in Gods Amazing Grace!
Pastor Mark

**Sunday Worship
9:30 a.m.**

**Sunday Fellowship
10:30 a.m.**

First Evangelical Lutheran Church

309 E. 3rd St. N.,

Newton, IA 50208

Phone: 641-792-3934

Fax: 641-792-3937

Email:

office@newtonfirstlutheran.org

www.newtonfirstlutheran.org

Pastor Mark Holmes

pastor@newtonfirstlutheran.org

515-321-4882

President

Judy Monroe

mmonroe@pcpartner.net

641-792-4950

Vice President

Secretary

Deb Rose

deborah.rose65@gmail.com

641-521-6415

Treasurer

David Goos

goos2104@iowatelecom.net

641-792-8818

Administrative Assistant

Kellie Kramer

office@newtonfirstlutheran.org

641-792-3934

Pastor's Office Hours

Tuesday & Thursday
1:00—5:00 p.m.
or by appointment

ANNOUNCEMENTS

Potluck scheduled for November 18th!

Since we just had the 150th celebration and we have a Thanksgiving holiday this month, our potluck is being moved to November 18th and will be in conjunction with our 5:00pm Thanksgiving Service! We are thankful for being together!
See you there!



Please remember, if you are having trouble hearing:
Listening devices are available. Please ask an usher.



Food Pantry
Donations Needed

The Food Pantry would like us to emphasize a specific item each month. **Remember, you may bring any item** you wish, but spreading their needs among the contributing congregations keeps a steady supply of their most basic needs coming each month. **For the month of November, pasta and rice have been requested.**

There is a basket in the narthex for all food pantry items.
Thank you for being so generous.

Chancel Flowers

Nov. 4—Goos
Nov. 11—George
Nov. 18—Egenes
Nov. 25—

Fellowship

Nov. 4—Kirchhoff/Swenson
Nov. 11—Frehse, Breuer,
Cantu
Nov. 18—
Nov. 25—

Please sign up to provide flowers and fellowship.

11/1 Nicole George
Tiffany Ketcham
11/2 Rosie Caldwell
Shad Marvelli
11/3 Andrew Ketcham
11/7 Dorothy Logan
11/8 Betty Peterson
11/11 James Baker
11/12 Cammie Wisgerhof

11/13 Brock Jordan
Carolyn Kirchhoff
11/14 Dennis Porter
11/15 Griffin Klyn
11/16 Larry Birkenholz
Brittany McNeer
11/19 Marjorie Baker
11/22 Dennis Dobesh
11/23 Mary Ann Iske



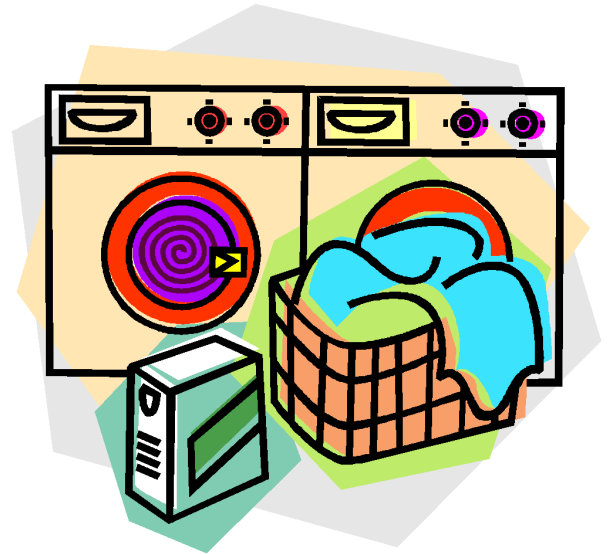
HAPPY BIRTHDAY

Copyright Homemade-Preschool.com

Thank you to all who donated to September's
Choices in Mission: Neighbors Helping
Neighbors Laundry Night!

Your donations of \$1254 were matched for a
total of \$2508!

Thanks! That provides a lot of soap and
quarters for lots of loads of laundry for our
neighbors in need.



Wednesday Night Community Dinners:

thank
you.

THANK YOU to the people that helped with our Wednesday Night Community Dinner last month! We served 83 people! Our next dinner at the Methodist Church will be on the 4th **Wednesday, November 28th**. Menus have been planned out but **we need people** to sign up to lead our crew each month. Please help! **Sign up in the narthex and come help Jesus feed the hungry.**

Choices in Mission for November—Lutheran Disaster Relief!

Following the two hurricanes in the past month, and the wild fires in the west this summer, the Service Committee is sponsoring the November Choices in Mission for Lutheran Disaster Relief. If you are not familiar with how our church body responds here is a weblink to help you know more:

<https://www.elca.org/Our-Work/Relief-and-Development/Lutheran-Disaster-Response/>

The Lutheran Church is well known for its total response to disasters both in the US and worldwide, Lutheran Disaster Relief stays until the residents are on their feet again. The Lutheran Church does not put a time limit on how long they will stay in a given area. And there is no shortage of need following both natural and manmade disasters.

Choices in Mission will match our dollars up to \$2500. The congregation can make a huge difference in the lives of those who have experienced disasters, even without driving there with our buckets, mops to help clean up, or our hammers to help rebuild.

Please consider being a part of this Choices in Mission.

Upcoming Choices in Mission:

December- God's Barnyard

January- Bury the Alter

If you have a mission you would like to bring forward for this ministry please visit with one of the Service Committee Members- Mark and Judy Monroe, Bob and Sarah Sandquist, and Craig and Betty Peterson. Any member can sponsor a Choices in Mission month. The Service Committee will give you guidance.

November Book Study

Adult book study will start on the first Sunday of November. We are reading and discussing "Nickel and Dimed" by Barbara Ehrenreich. If you don't have a copy yet- there are still copies available in the fellowship hall!! We will have some Fellowship time after worship service and then gather to discuss.



Harvest Supper- and other schedule updates!

We have some exciting opportunities coming soon to share food and fellowship- These opportunities are also rearranging our monthly potluck schedule- so please mark your calendars

The Harvest Supper is back! On Sunday, November 18, we will meet in Fellowship Hall at 5pm for a brief Thanksgiving service followed by the Harvest Supper- a potluck meal.

December 2- no potluck

December 9 (the second Sunday of December)- chili and caroling! Please come to church dressed to head out and bring Christmas carols to some of our members! Chili will be provided- please bring a side dish or chili topping to share (we'll have a sign up so we don't have too many pounds of shredded cheese). After chili we will deliver goodie plates and sing carols.

Please watch for announcements in the December newsletter about food and fellowship opportunities in January and February!

On September 30th
First Lutheran
Celebrated the
First Communion
of three members:

Lexi Frehse
Talia Friedman
Ashlyn Karsten



Zinga Update

October! What a month it was! First off, the church was decorated by Dorcas' lovely quilts, by now sent off to warm those in need. Next, Paula and Denny Lofstrom came to bring us up to date on what is happening at the Children's Hospital at Zinga. On the third Sunday, we celebrated Confirmation. Finally, on the last Sunday of the month, Reformation Sunday, we observed the 150 th anniversary of our congregation and the inauguration of our gloriously restored organ with a celebration service, a banquet, and an organ concert. Our former pastor Matthew Martens, who gave the morning sermon, reminded us that with confident faith in God's guidance for the congregation, the best is yet to come. A big thank-you to the sesquicentennial celebration planning committee for preparing this wonderful day for the congregation!

But back to Zinga: Our focus for Choices in Mission this year was to raise money toward the purchase of a reconditioned bus to traverse the roads during the rainy season, and also to provide transportation for volunteers arriving at the hospital. In addition, the bus will bring staff and other workers to and from work, a common service in a country where few people own cars. At the beginning of the month, funds earmarked for the bus in Tanzania stood at \$18,000. We will soon know how much closer our gifts, with the match from the church, have brought the goal of raising \$33,000 for the bus. Let us hope IHP will soon be able to make this purchase. Thank you to all who so generously support our Tanzania mission with your gifts of time, prayers, and money. In all our mission endeavors, First Lutheran looks ahead: The best is yet to come!

For our Zinga Mission,
Marie Quanbeck

Prayer Corner

We pray for our families, friends and church family. Lord, November is turning our autumn to winter. Turning our thoughts to holidays. Will we be spending our days with family and friends or will we find ourselves missing loved ones and thinking of those far away. Help us to look around ourselves. Are there others we could be spending time with or could bring into our activities? As we look to the activities we will be planning, are we excited or overwhelmed? What if we didn't do everything? What if we only kept what brings the most joy to those around us and ourselves? What if a gift wasn't an impossible obligation, but were instead moments to celebrate a person? It may not be possible to change everything we wish we could, but we can take steps, even small ones, toward our goal. We continue to pray for our congregation, our leaders, our community and our world.

Planning The 2019 Ministry of First Lutheran

While it is hard to believe, 2019 will be here in less than 60 days. In the coming year, First Lutheran will continue to do God's work, in Newton, the state, the country, and the world. The coming year promises to be one of the most exciting and enriching in our 150 year history. In 2019 we will be helping more people discover not only that Jesus is at work in their life but that he wants to have a relationship with them. We will praise him through worship and music, as we hear the sweet sounds coming from the updated organ and voices of those present. If there was ever a time for faith, prayer, and service to others it is today.

We now have the opportunity to step forward in faith and grow our giving to strengthen the Ministry of First Lutheran. Over the next couple of weeks we will be reviewing and contemplating what portion of the gifts which God has given us, that we will return to his good works. A letter and commitment card will be mailed to everyone, along with a giving estimate calculator. The plan is to bring this card with you to Church on November 11, which is our Commitment Sunday. If you are unable to bring your card that day we would ask that you mail it to the office or drop it off with Kellie sometime that following week.

The approval of our ministry budget is a part of the annual meeting held on December 2nd. It is important that we get everyone's intentions to have accurate picture of the support for the Ministry in 2019.

Thank you.
Stewardship Committee

A Farewell Note from Kellie

Greetings My Friends,

It has been an honor and a pleasure to work among you for the past five and a half years. I have laughed and cried, learned and taught, grown, stretched and discerned God's will in many a moment, with much help and guidance. All in all, a thoroughly amazing experience. As my predecessor warned me, First Lutheran is a hard place to leave. However, leave I must as I have accepted a full-time position in Appleton, Wisconsin and must be there by the end of the month. Thank you for everything, but especially your friendship. If you find yourself up for a Green Bay game or the Oshkosh air show, or another adventure, please jingle my cell 641-820-1605. We will return for visits too, so don't be a stranger.

Peace,
Kellie Kramer

November LSI Update

National Adoption Month

November is National Adoption Month, a time to honor families who have opened their hearts and homes to children in need. For LSI it is a time to celebrate the families we support through Foster Care and Adoption, and to raise awareness for the hundreds of Iowa children in need of a safe, loving home.

In 30 counties in western Iowa, LSI Foster Care and Adoption recruits, licenses, and supports foster and adoptive families to ensure every Iowa child grows up in a safe, stable environment.

But more work needs to be done. According to the most recent federal data, more than 100,000 children in the U.S. are waiting to be adopted from foster care, and thousands of teens age out of foster care every year without a permanent family. To learn more about supporting Iowa children in foster care, visit LSIowa.org/Foster, or contact Deb Whitford, LSI director of philanthropy and church relations, at Deborah.Whitford@LSIowa.org or 563-676-2065.

Our Mission: Lutheran Services in Iowa responds to the love of Jesus Christ through compassionate service. LSI is an affiliated social ministry partner of the Iowa congregations of the ELCA (Evangelical Lutheran Church in America) and a member of LSA (Lutheran Services in America). We proudly serve people of all ages, abilities, religions, sexes, gender identities, national origins, ethnicities, races, and sexual orientations. Learn more at www.LSIowa.org and www.facebook.com/LSI.iowa.

Helping to Carry the Load

Renato and Nellie Jimenez knew they wanted to adopt children. But when they learned about the desperate need for foster families, they also decided to open their home to children in need of safe, temporary care.

"We realized there are some big needs out there," Renato says. "Sometimes, we might not see it. But there are people suffering and struggling. We knew our family could make a difference."

Over the last four years, Renato and Nellie have adopted four children and are currently fostering three. Their children range from 6 months to 14 years of age.

The couple enjoys supporting children of all ages, and they focus their parenting on helping them stay connected to their history and culture whenever possible.

Especially for older children, Renato says, it is vital to be given a safe space to open up and talk about the past in a healthy way.

"The most rewarding experience is the transformation of the kids. They come with baggage and they come hurt. But we can provide a home and love and security for them, so they know they belong in a family," Renato says. "Be there for the kids. The more healthy and supportive people these kids have around them, the better. Help them carry the load."

November 2018

Sun	Mon	Tue	Wed	Thu	Fri	Sat
				1	2	3
4 9:30 Worship 10:30 Fellowship	5	6	7 6:30 Confirmation	8 Good Cheer 5-7pm OPEN Spaghetti dinner 6:30 Council	9	10 10am-2pm NHN Clothing giveaway
11 Commitment Sunday 9:30 Worship 10:30 Fellowship	12 7:00 Hannah	13	14 6:30 Confirmation	15	16	17
18 9:30 Worship 10:30 Fellowship 5:00 Thanksgiving Service and Potluck	19 Newsletter articles due this week	20	21 9:30 Lois 1:00 Martha 6:30 Confirmation 7:00 Eunice	22 Thanksgiving Office Closed	23 Office closed	24
25 9:30 Worship 10:30 Fellowship	26	27 9:00 Dorcas	28 5:30 Community Dinner 6:30 Confirmation	29	30	

November Serving Schedule

Sunday 9:30am	Acolyte	Council on Duty	Lector	Ushers	PA
November 4th	Ben Breuer, Leo Friedman	Andy Breuer	Aaron Bartholmey	Dirk Amundsen, Alex Anderson	Deb Rose
November 11th	Thomas Hodnett	Pat Foote	Aaron Bartholmey	Lee Swenson, Aaron Bartholmey, Dennis Porter	Duane Quanbeck
November 18th	Claire Breuer	Deb Rose	Marie Quanbeck	Bob Floss, Stan Kirchhoff	David Goos
November 25th	Hailey Sumpter	Marie Quanbeck	Marie Quanbeck	Gary Johnson, Jim Lammey	

First Lutheran Church
309 E 3rd St N
Newton, IA 50208

November at First Lutheran

**Nov. 8—OPEN spaghetti
dinner 5-7pm**

**Nov. 10—10am-2pm
Clothing Giveaway by
Neighbors Helping
Neighbors**

**Nov. 18—5pm
Thanksgiving Service**



Evangelical Lutheran Church in America
God's work. Our hands.